

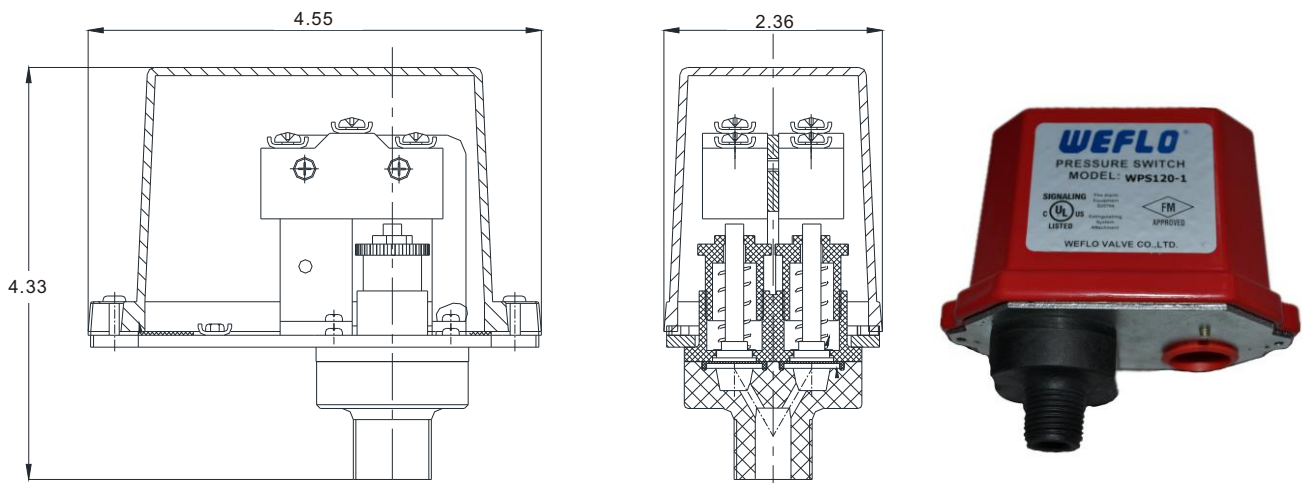
## Pressure Switch

## FIG·WPS10-1/WPS10-2/ WPS40-1/WPS40-2/ WPS120-1/WPS120-2

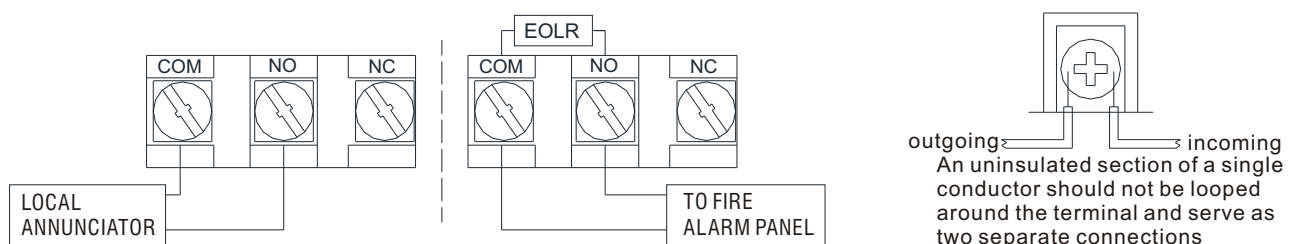
### Features

- Maximum Adjustment Pressure Range:  
WPS10-1/WPS10-2: 4-20psi  
WPS40-1/WPS40-2: 10-100psi  
WPS120-1/WPS120-2: 10-200psi
- Factory Setting:  
WPS10-1, WPS10-2: 4-8 psi  
WPS40-1: operates at decreasing pressure at 30 psi  
WPS40-2: operates at increasing pressure at 50 psi and decreasing pressure 30 psi  
WPS120-1: operates at decreasing pressure at 110 psi  
WPS120-2: operates at increasing pressure at 130 psi and decreasing pressure 110 psi
- Approximate Differential:  
WPS10-1/WPS10-2: 3 psi throughout range  
WPS40-1/WPS40-2: 3 psi @ 10psi & 6psi @ 100psi  
WPS120-1/ WPS120-2: 3 psi @ 10psi & 9psi @ 200psi
- Contact Rating: 10A@125/250VAC, 2.5A@ 30VDC
- IP 66.
- UL/ULC Listed.
- FM Approved.

### Schematic&Dimensions/Inch



### Typical Connections



The designs, materials and specifications shown are subject to change without notice due to the continuous development of our products.