

## Break Check Valve

FIG · F1315

### Specification

- Flanged Vertical Attachment Shoe : ANSI B16.1, Class 125, ASME B16.42, Class 150.
- Mechanical Joint Elbow Attachment Shoe: AWWA C111 Standard

### Working Temperature

- -10°C to 82°C.

### Corrosion Protection

- Internally and externally spray epoxy painted or fusion bonded epoxy powder coated (FBE).

### Notes:

Design and material are subject to change without notice.

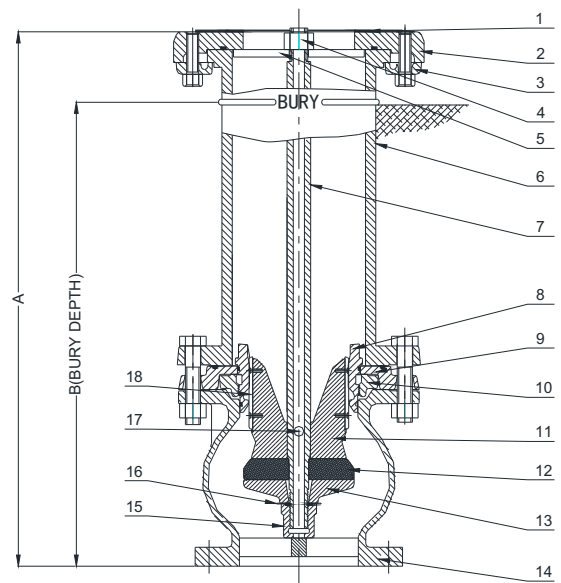
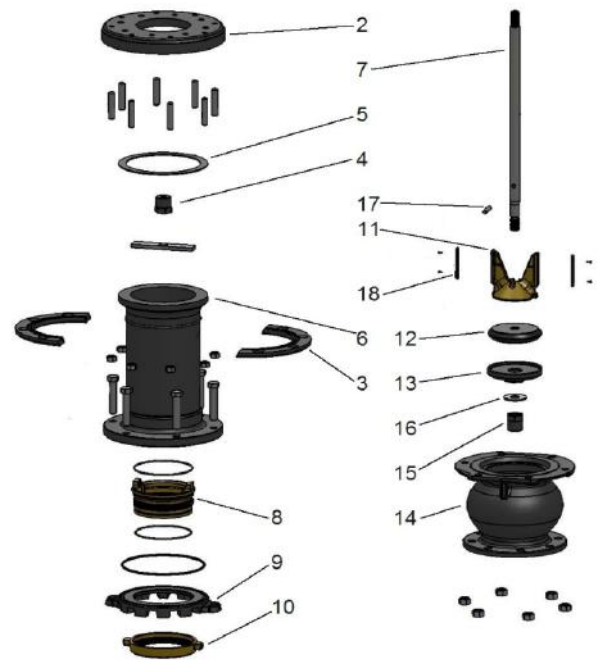
### Material Specification

No.	Part Name	Material	ASTM Spec.
1	Washer	Rubber	NBR
2	Flanged Joint	Cast iron	A126 Class B
3	Break-Away Flange	Cast iron	A126 Class B
4	Nut	Stainless Steel	AISI 316
5	Retaining Plate	Stainless Steel	AISI 304
6	Lower Barrel	Ductile Iron	ASTM A536 65-45-12
7	Break Check Valve Stem	Stainless Steel	AISI 304
8	Seat Ring	Bronze	B62 C83600
9	Drain Ring Housing	Cast iron	A126 Class B
10	Drain Ring	Bronze	B62 C83600
11	Valve Top Plate	Bronze	B62 C83600
12	Main Disc	Rubber	NBR
13	Bottom Plate	Cast iron	A126 Class B
14	Vertical Shoe	Cast iron	A126 Class B
15	Plate Nut	Cast iron	A126 Class B
16	Lock Washer	Stainless Steel	AISI 304
17	Pin	Stainless Steel	AISI 304
18	Drain Valve Facing	Nylon	

### Dimensions (mm / inch)

A		B	
mm	inch	mm	inch
628	24.7	533	21.0
527	20.7	432	17.0

### Schematic



The designs, materials and specifications shown are subject to change without notice due to the continuous development of our products.