

## Alarm and Test Valve

FIG-F6011

### Specifications

- 1" or 1 1/4" full bore test valve.
- Easy access for servicing.
- Space saving design.
- Quick and easy installation.
- Less joints minimises risk of leaks.
- UL Listed.

### Installation Guide

- Carefully roll the vane opposite the direction of flow and screw the device into the manifold. Apply PTFE Teflon tape to the flow switch thread is recommended.
- Ensure the paddle does not interfere with the internal sides of the manifold. The stem should move freely when operated by hand.
- Care must be taken to properly orient the device for the direction of water flow.
- Tighten the device using a wrench on the flats of the device.

### Working Pressure

- 300 PSI.

### Working Temperature

- 0 °C to 68°C.

### Corrosion Protection

- Fusion Bonded Epoxy Coated Interior and Exterior or Enamel Spray Paint, Interior and Exterior.

### Material Specifications

| No. | Part Name          | Material              |
|-----|--------------------|-----------------------|
| 1   | Ball Valve         | Assembly              |
| 2   | Body               | Stainless Steel,SS304 |
| 3   | Waterflow Detector | Assembly              |
| 4   | Pressure Gauge     | Assembly              |
| 5   | Plug               | Stainless Steel,SS304 |

### Notes :

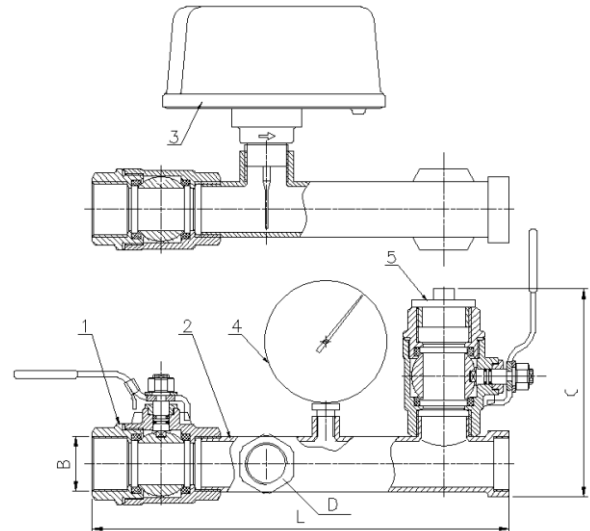
*Design and material are subject to change without notice.*

### Dimensions(mm)

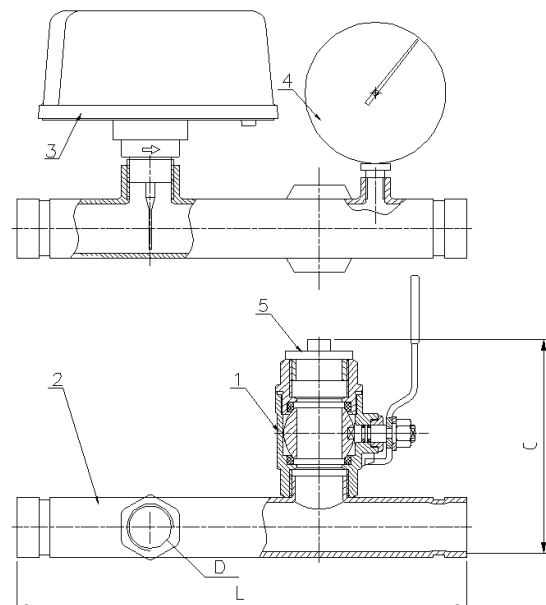
| Size |               | DN 25 / 1" | DN 32 / 1 1/4" |
|------|---------------|------------|----------------|
| L    | Threaded Ends | 300        | 310            |
|      | Grooved Ends  | 320        | 320            |
| C    |               | 150        | 155            |
| D    |               | 1"         | 1"             |

### Material Specifications

Threaded Ends



Grooved Ends



The designs, materials and specifications shown are subject to change without notice due to the continuous development of our products.